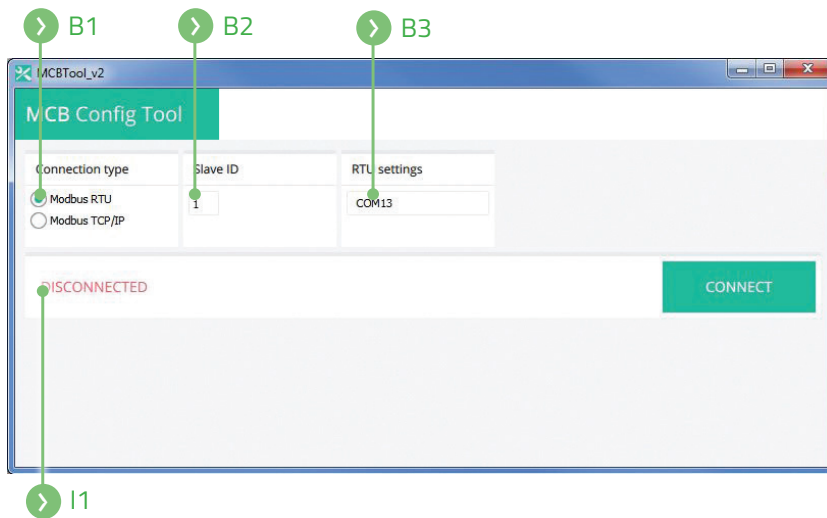


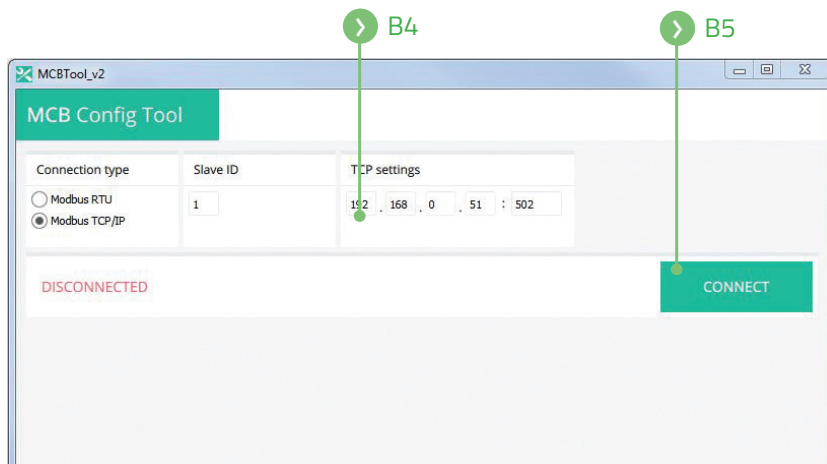
CHOOSE CONNECTION TYPE

- › Modbus RTU (connect with RS485 converter)



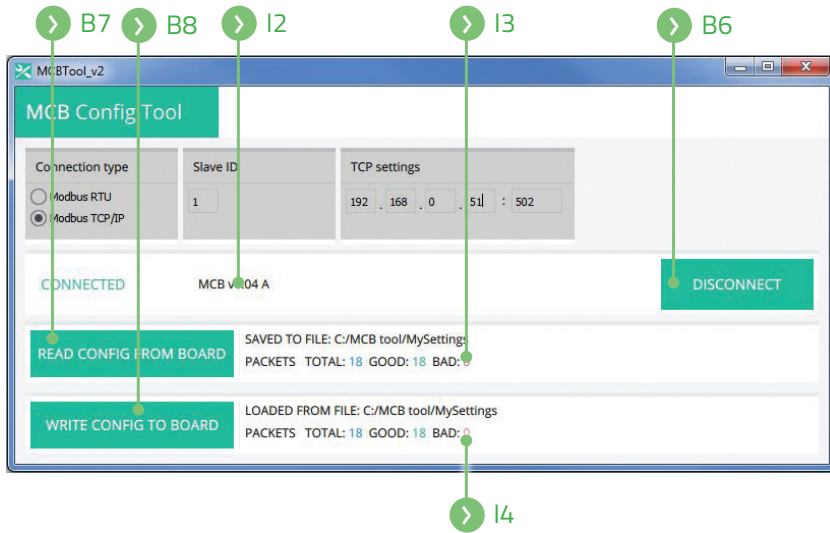
I1	Connection status
B1	Select connection type
B2	Set Modbus slave ID
B3	Select COM port of RS485 converter

- › Modbus TCP/IP (connect with TCP/IP Modbus gateway (MB-GATEWAY))



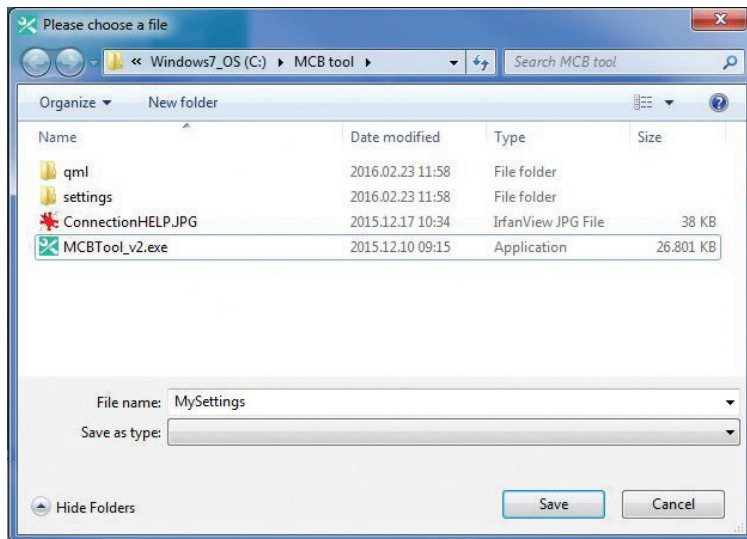
B4	Set IP of TCP/IP Modbus gateway (MB-GATEWAY)
B5	Press to connect

CONNECT TO DEVICE (press "connect" button)



I2	Device software version
I3	Configuration read status
I4	Configuration write status
B6	Press to disconnect from device
B7	Press to read configuration from device
B8	Press to write configuration to device

READ CONFIGURATION FROM DEVICE AND SAVE TO YOUR COMPUTER (press "read config from board" button and write configuration file name)



WRITE CONFIGURATION TO DEVICE FROM YOUR COMPUTER (press "write config to board" button and select configuration file)

